

# PISO-CAN Series FAQ

Q1 · How does these two parameter, Acceptance Code and Acceptance Mask, work in PISO-CAN200/400 ? (2011/1/5,Bear).....	2
Q2 · Does LabVIEW CAN driver support other versions of LabVIEW? (2011/1/5,Bear).....	3
Q3 · If my PISO-CAN program only has the function ActiveBoard but no the function CloseBoard, there is any resource can't release after I close my program ? (2011/1/5,Ming) ...	3
Q4 · There are two functions in PISO-CAN library, CAN_Config and CAN_ConfigWithoutStruct. Are them the same? (2011/1/5,Ming) .....	3
Q5 · What's the Linux OS that the PISO-CAN200/400U supports? (2012/06/17,Andy).....	4
Q6 · Where can I find the driver, utility and setup file versions of the PISO-CAN series devices. (2012/12/25,Andy) .....	4
Q7 · Why the demo code of PISO-CAN runs fine in 32-bits OS, but there will display an error message, "Unable to load DLL pisocan.dll. The specified module could not be found.", in Windows 7 Professional 64-bit edition & Windows XP 64-bit edition platform? (2012/12/25,Andy) .....	6
Q8 · Can the PISO-CAN RTX 8.0 driver be used on the environment of RTX2011 version?? (2012/12/25,Andy) .....	6
Q9 · Does the PISO-CAN series CAN card supports CANopen master/slave functions?? (2013/12/05,Andy) .....	6
Q10 · Why the PISO-CAN RTX demo code displayed an error message when execute the rtss file?? (2013/12/05,Andy).....	7



**Q1 、 How does these two parameter, Acceptance Code and Acceptance Mask, work in PISO-CAN200/400 ? (2011/1/5,Bear)**

A : Acceptance Code is the CAN ID that you want to get, and Acceptance Mask is the CAN ID that you want to filter. For example, if the CAN ID mode is 2.0A :

1. If users want to get all the messages on the CAN bus, the setting must be as follow:

	byte 0	byte 1	byte 2	byte 3	
Acceptance Code:	XX	XX	XX	XX	( X is don't care)
Acceptance Mask:	FF	E0	XX	XX	( 1111 1111 1110 0000 bit )

2. If users want to get the message of CAN ID 0x123 and filter all the other CAN message, the setting must be as follow:

	byte 0	byte 1	byte 2	byte 3	
Acceptance Code:	24	60	XX	XX	( 0010 0100 0110 0000 bit )
Acceptance Mask:	00	1F	XX	XX	( 0000 0000 0001 1111 bit )

3. If users want to get the message of CAN ID from 0x100 to 0x12F and filter all the other CAN message, the setting must be as follow:

	byte 0	byte 1	byte 2	byte 3	
Acceptance Code:	20	60	XX	XX	( 0010 0xxx xxxx xxxx bit )
Acceptance Mask:	07	FF	XX	XX	( 0000 0111 1111 1111 bit )

The setting of CAN 2.0A and CAN 2.0B are the same. The different between 2.0A and 2.0B is the CAN ID bits. In CAN 2.0A, number of CAN ID bits is 11. In CAN 2.0B, number of CAN ID bits is 29  
(2011/1/5,Bear)

**Q2 、 Does LabVIEW CAN driver support other versions of LabVIEW?  
(2011/1/5,Bear)**

A : No. LabVIEW CAN driver only support LabVIEW 7.x version, and doesn't support the LabVIEW with above 8.x version. If users want to user LabVIEW 5.x and 6.x version, please make contact us for more information.

(2011/1/5,Bear)

**Q3 、 If my PISO-CAN program only has the function ActiveBoard but no the function CloseBoard, there is any resource can't release after I close my program ? (2011/1/5,Ming)**

A: No. Even if no use the function CloseBoard, PISO-CAN driver can release all the resources related the PISO-CAN board such as IRQ, CAN message buffer, and so on after exit PISO-CAN programs, too.

(2011/01/05, Ming)

**Q4 、 There are two functions in PISO-CAN library, CAN\_Config and CAN\_ConfigWithoutStruct. Are them the same? (2011/1/5,Ming)**

A: Yes, these two functions are the same. The different point of them is that, the CAN\_Config uses structure parameter to input configuration information and the CAN\_ConfigWithoutStruct use dispersion parameters to do it. Because the structure parameter may be incompatible on different program development. In this case the function CAN\_ConfigWithoutStruct will be usefully.

(2011/01/05, Ming)

**Q5 · What's the Linux OS that the PISO-CAN200/400U supports?  
(2012/06/17,Andy)**

A:

The Linux kernel versions of distributions are listed below.

Linux kernel version of distributions	
Linux kernel Distribution	2.6.37
Debian GUN/Linux	4.0
Fedora Core	2/3/4/5/6/7/8
Mandrake(Mandriva)	10.0/10.1/10.2
Red Hat Enterprise	4/5
Ubuntu	7.04
SUSE	9.1/9.2/9.3/10.0

(2012/06/17, Andy)

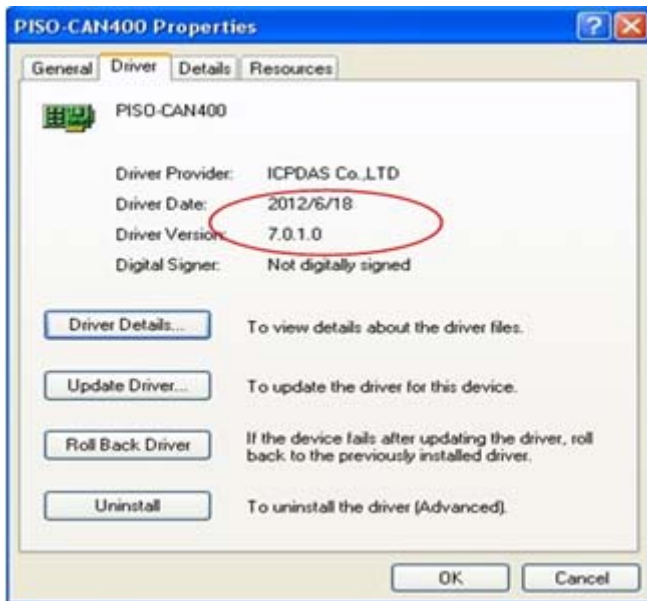
**Q6 · Where can I find the driver, utility and setup file versions of the PISO-CAN series devices. (2012/12/25,Andy)**

A:

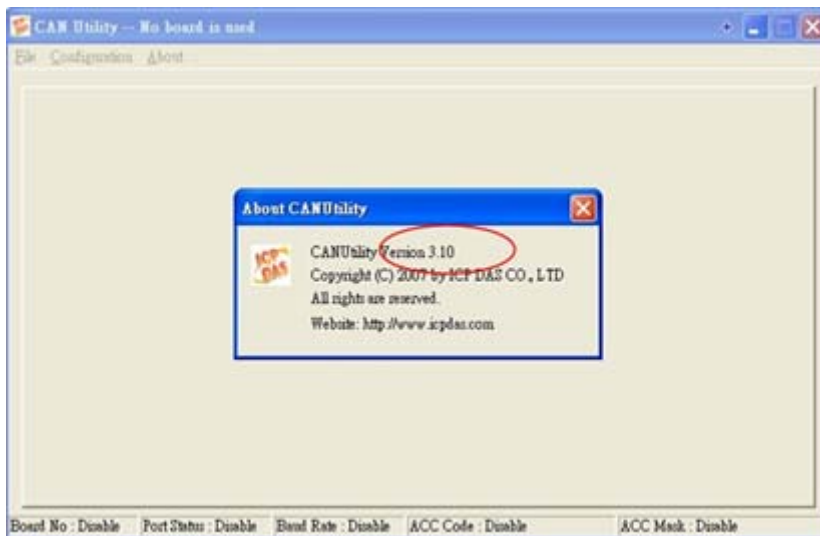
Setup file version: get the file version from the "add or remove programs".



SYS version: "System Properties" => "Hardware" => "Device Manager" => "PISO-CAN400 Properties"



Utility: Press the "About" button on the Utility tool to get the Utility version



(2012/12/25, Andy)

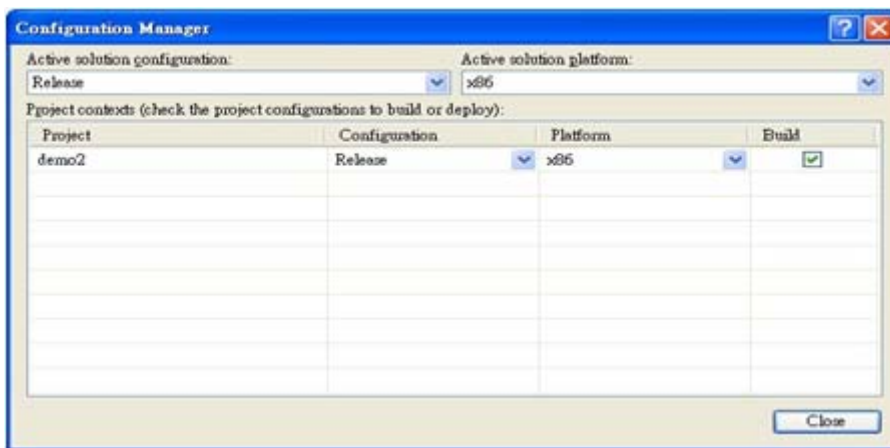
**Q7 · Why the demo code of PISO-CAN runs fine in 32-bits OS, but there will display an error message, "Unable to load DLL pisocan.dll. The specified module could not be found.", in Windows 7 Professional 64-bit edition & Windows XP 64-bit edition platform? (2012/12/25,Andy)**

A:

If you run the demo on 64-bit OS, please modify the demo solution platform from "Any CPU" to "x86"

Menu tool bar => Build => Configuration Manager => modify the platform from "Any CPU" to "x86".

Then re-build the project and re-execute the exe file.



(2012/12/25, Andy)

**Q8 · Can the PISO-CAN RTX 8.0 driver be used on the environment of RTX2011 version?? (2012/12/25,Andy)**

A:

No. The RTX 8.0 driver does not correspond with the environment of RTX2011. If users want to use PISO-CAN RTX driver on RTX 2011, please select the PISO-CAN RTX2011 driver.

(2012/12/25, Andy)

**Q9 · Does the PISO-CAN series CAN card supports CANopen master/slave functions?? (2013/12/05,Andy)**

A:

Now PISO-CAN series supports CANopen master PDO/SDO functions, not support slave functions. User can refer to following web site for CANopen master library.

[http://www.icpdas.com/products/Remote\\_IO/can\\_bus/cpm\\_lib.htm](http://www.icpdas.com/products/Remote_IO/can_bus/cpm_lib.htm)

(2013/12/05, Andy)



**Q10 · Why the PISO-CAN RTX demo code displayed an error message when execute the rtss demo file?? (2013/12/05,Andy)**



A:

Before running the PISO-CAN series RTX API function, users need to execute the “pisocan\_rtx.rtss” file. Otherwise, there this error message will be displayed when running PISO-CAN series RTX API.

(2013/12/05, Andy)